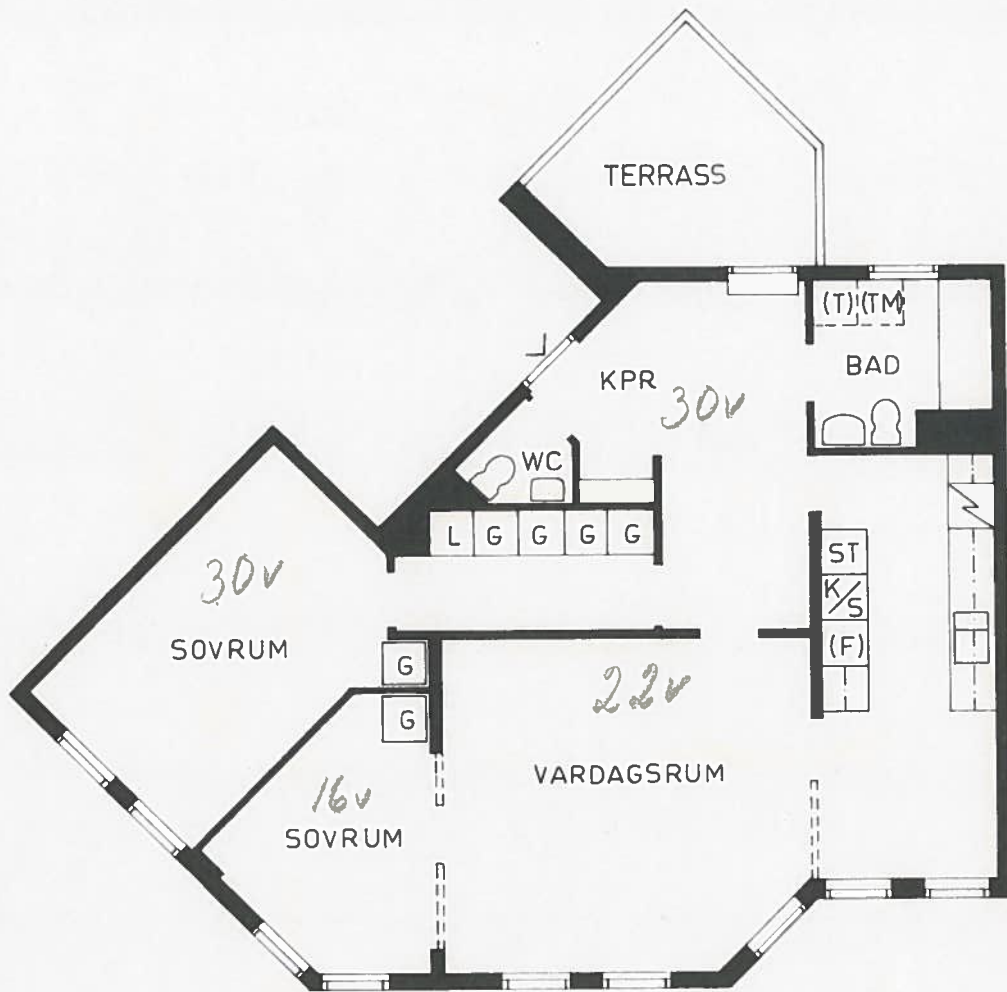


0 1 2 3 4 5 6 7 8 9 10

SKALA 1:100



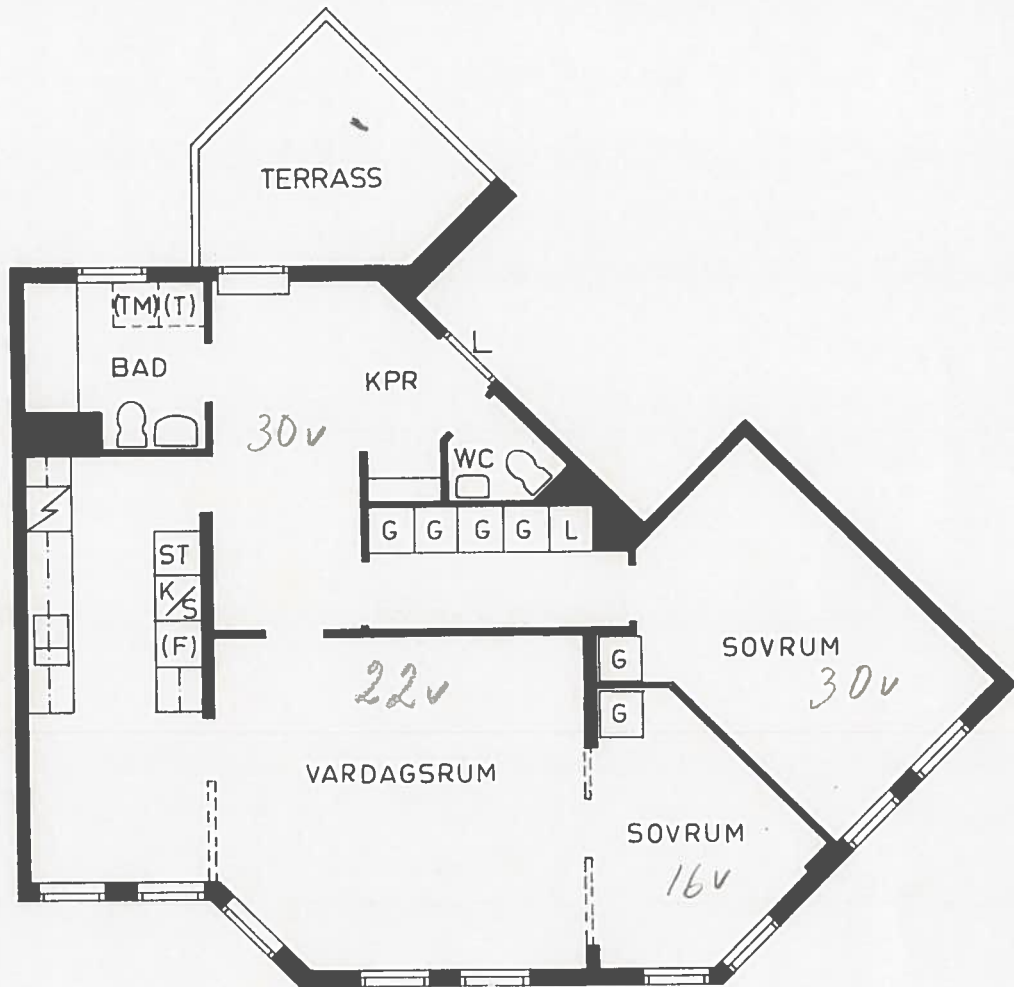
**AB SVENSKA BOSTÄDER  
KV. RIDDARSPORREN**

TYP	YTA	LXG. NR
3E	83m <sup>2</sup>	

15D

0 1 2 3 4 5 6 7 8 9 10

SKALA 1:100

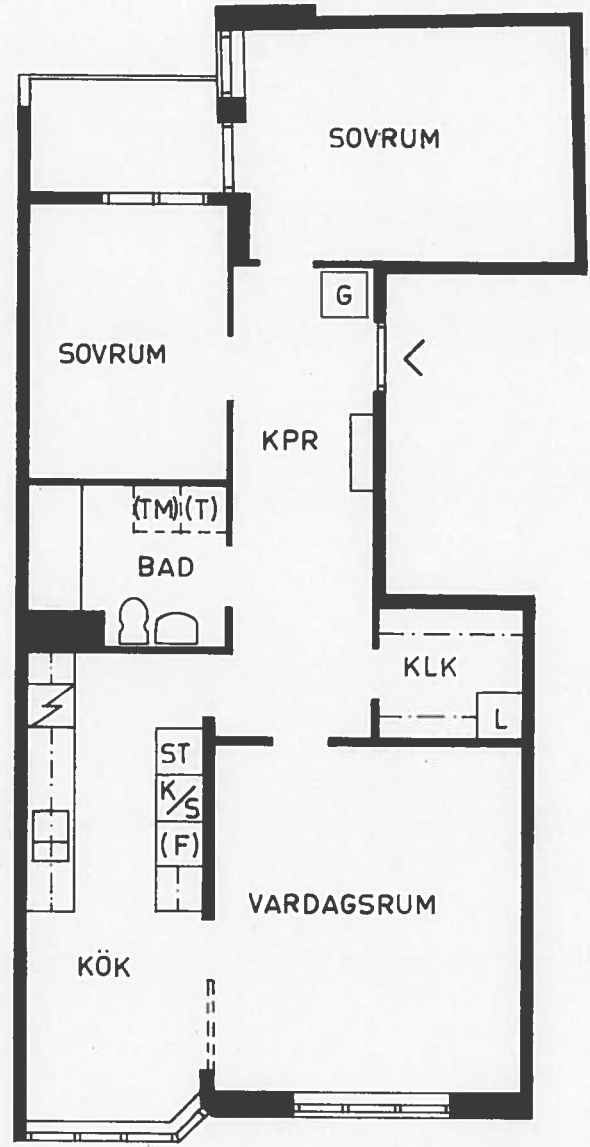


<b>AB SVENSKA BOSTÄDER</b>		
<b>KV. RIDDARSPORREN</b>		
<b>TYP</b>	<b>YTA</b>	<b>LÅG. NR</b>
3Es	83 m <sup>2</sup>	
15D		

0 1 2 3 4 5 6 7 8 9 10

SKALA 1:100

17J

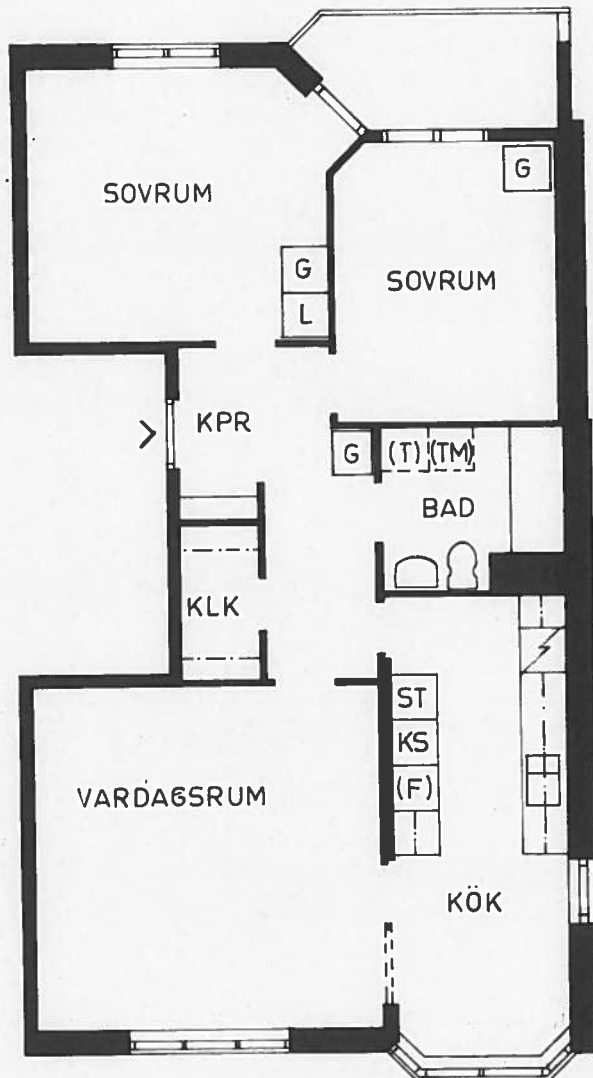


<b>AB SVENSKA BOSTÄDER</b>		
<b>KV. RIDDARSPORREN</b>		
TYP	YTA	LÄG. NR
3F	77m <sup>2</sup>	
17J		

0 1 2 3 4 5 6 7 8 9 10

SKALA 1:100

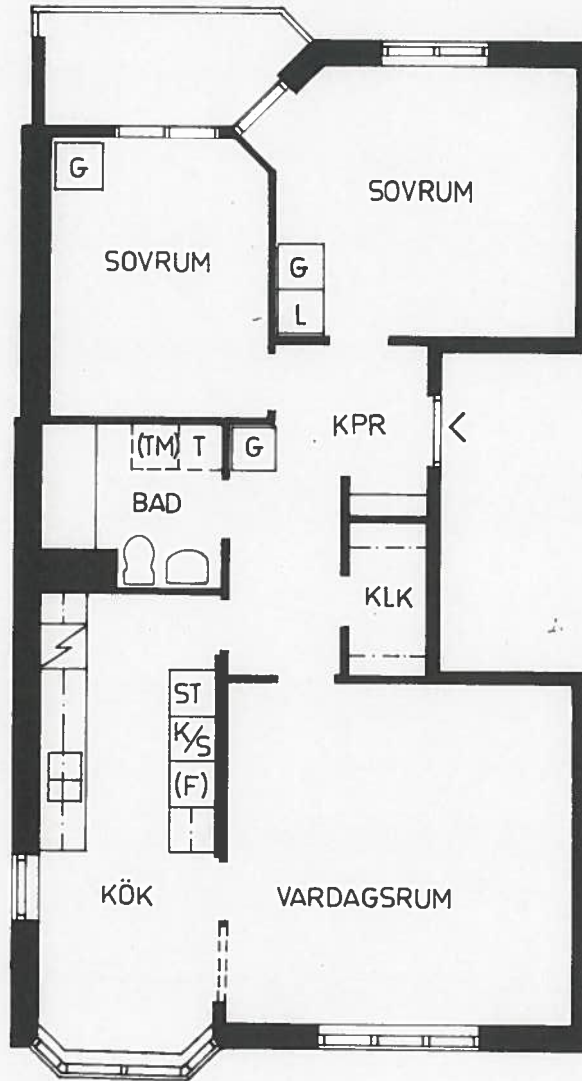
17E



<b>AB SVENSKA BOSTÄDER</b>		
<b>KV.RIDDARSPORREN</b>		
TYP	YTA	LXG. NR
3G	77 m <sup>2</sup>	
17E		

0 1 2 3 4 5 6 7 8 9 10

SKALA 1:100



**AB SVENSKA BOSTÄDER  
KV. RIDDARSPORREN**

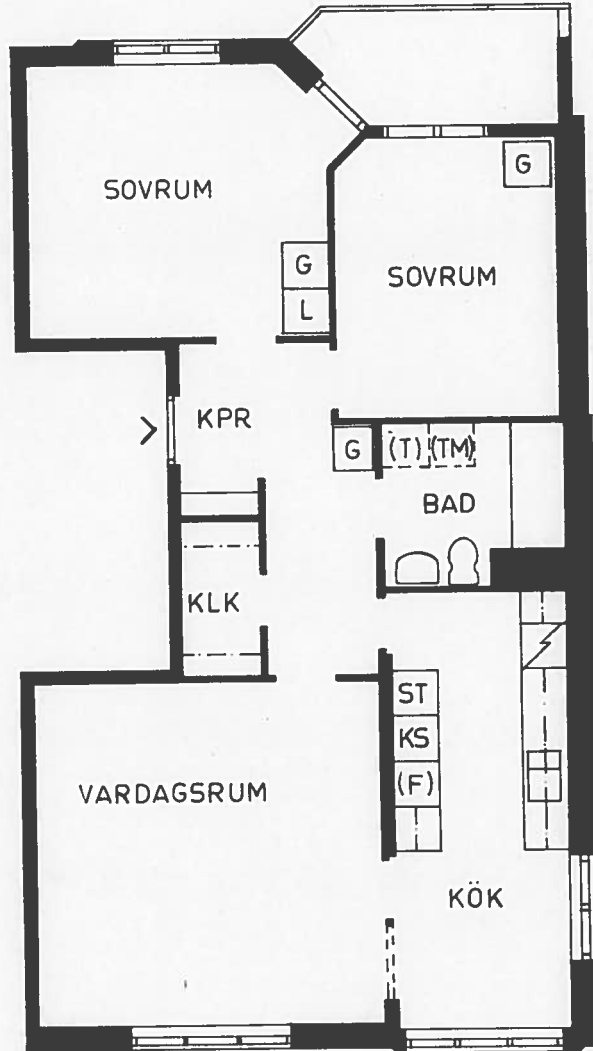
TYP	YTA	LÄG. NR
3Gs	77m <sup>2</sup>	

15 A

0 1 2 3 4 5 6 7 8 9 10

SKALA 1:100

17E

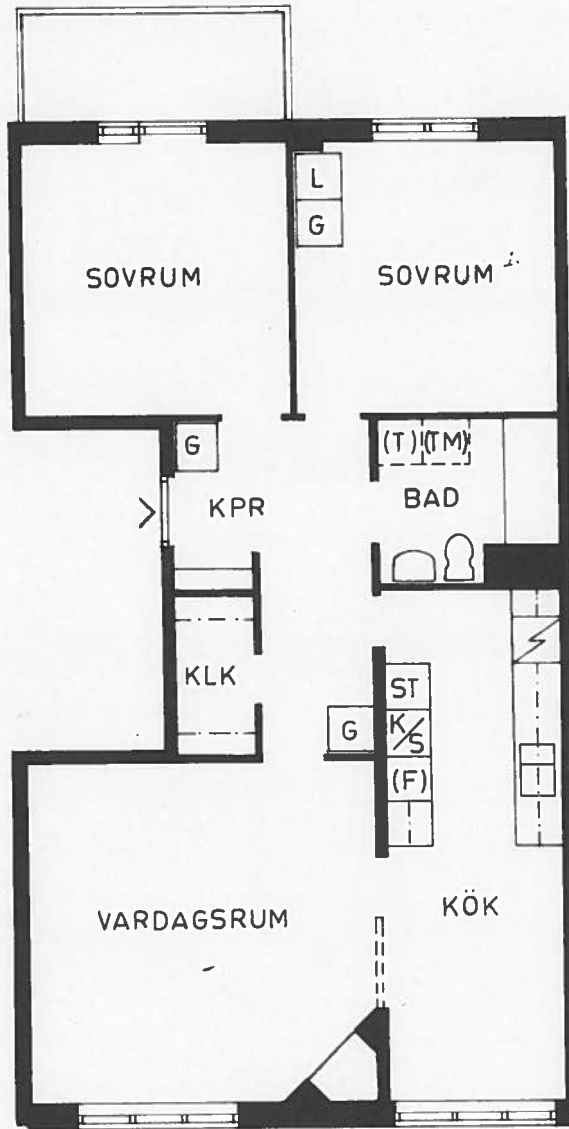


AB SVENSKA BOSTÄDER		
KV.RIDDARSPORREN		
TYP	YTA	LXG. NR
3H	77m <sup>2</sup>	
17E	77m <sup>2</sup>	

0 1 2 3 4 5 6 7 8 9 10

SKALA 1:100

17C



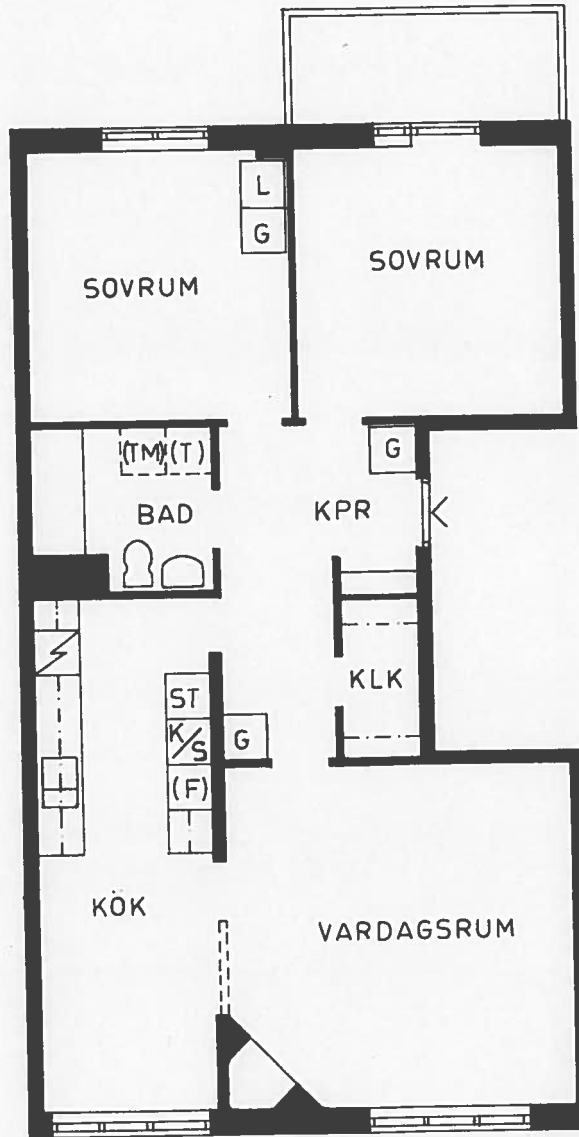
**AB SVENSKA BOSTÄDER**  
**KV. RIDDARSPORREN**

TYP	YTA	LÄG. NR
3 I	79m <sup>2</sup>	

17C

0 1 2 3 4 5 6 7 8 9 10

SKALA 1:100



**AB SVENSKA BOSTÄDER**  
**KV. RIDDARSPORREN**

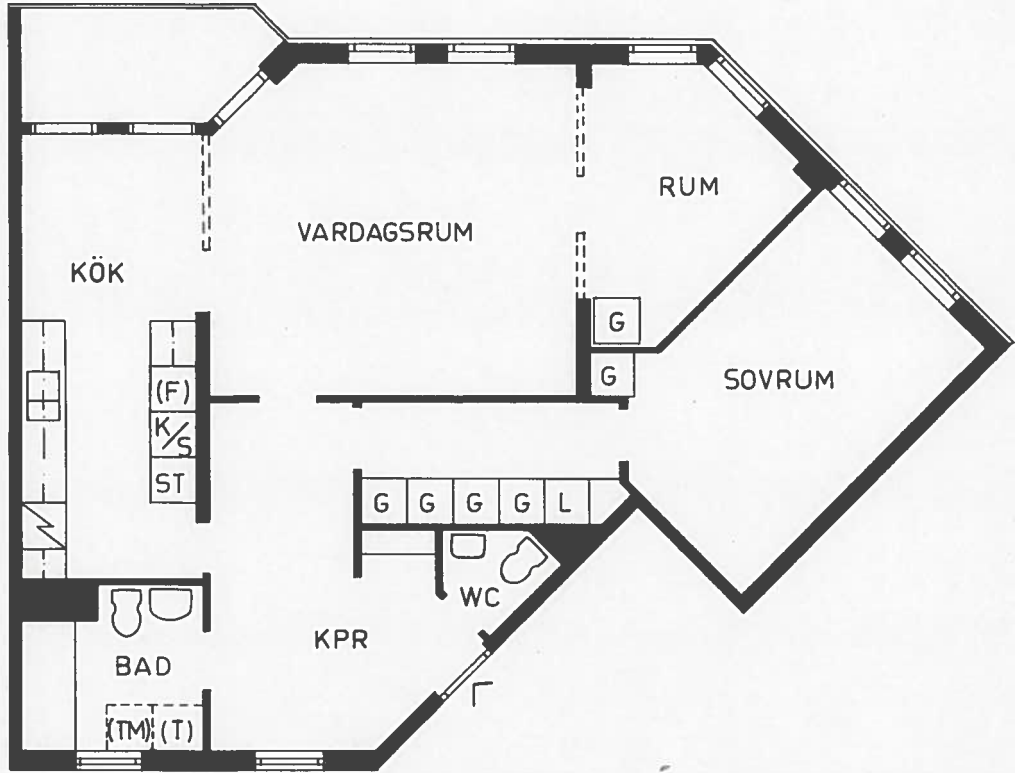
TYP	YTA	LÄG. NR
3 Is	79m <sup>2</sup>	

17B



0 1 2 3 4 5 6 7 8 9 10

SKALA 1:100

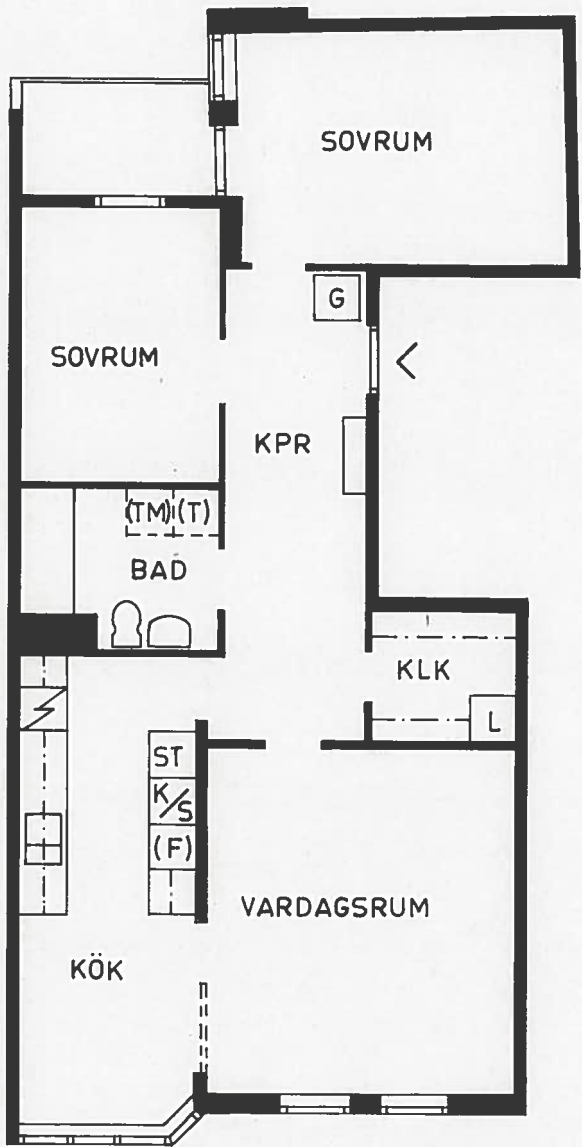


**AB SVENSKA BOSTÄDER  
KV.RIDDARSPORREN**

TYP	YTA	LÄG. NR
3J	82 m <sup>2</sup>	

17B

173



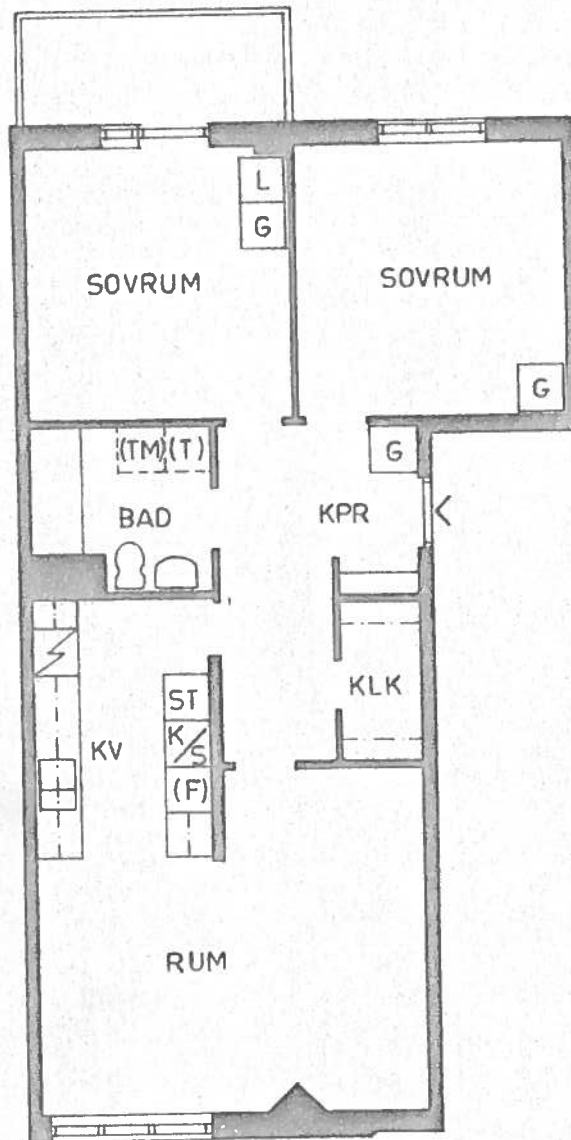
**AB SVENSKA BOSTÄDER  
KV. RIDDARSPORREN**

TYP	YTA	LAG NR
3K	77 m <sup>2</sup>	

173

0 1 2 3 4 5 6 7 8 9 10

SKALA 1:100



**AB SVENSKA BOSTÄDER  
KV. RIDDARSPORREN**

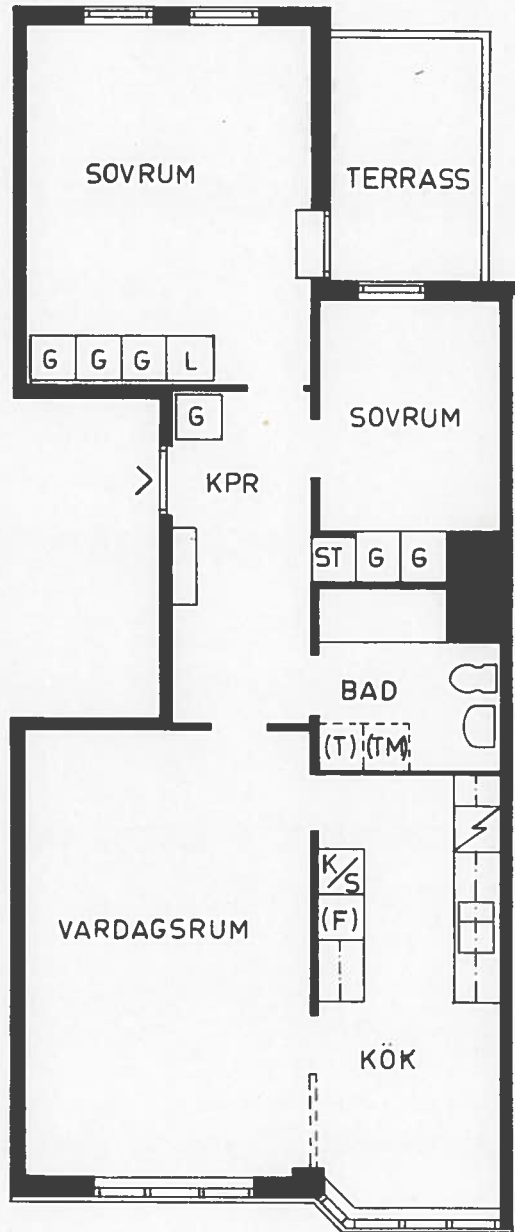
TYP	YTA	LXG. NR
3KvAs	71m <sup>2</sup>	

15 F

0 1 2 3 4 5 6 7 8 9 10

SKALA 1:100

17F



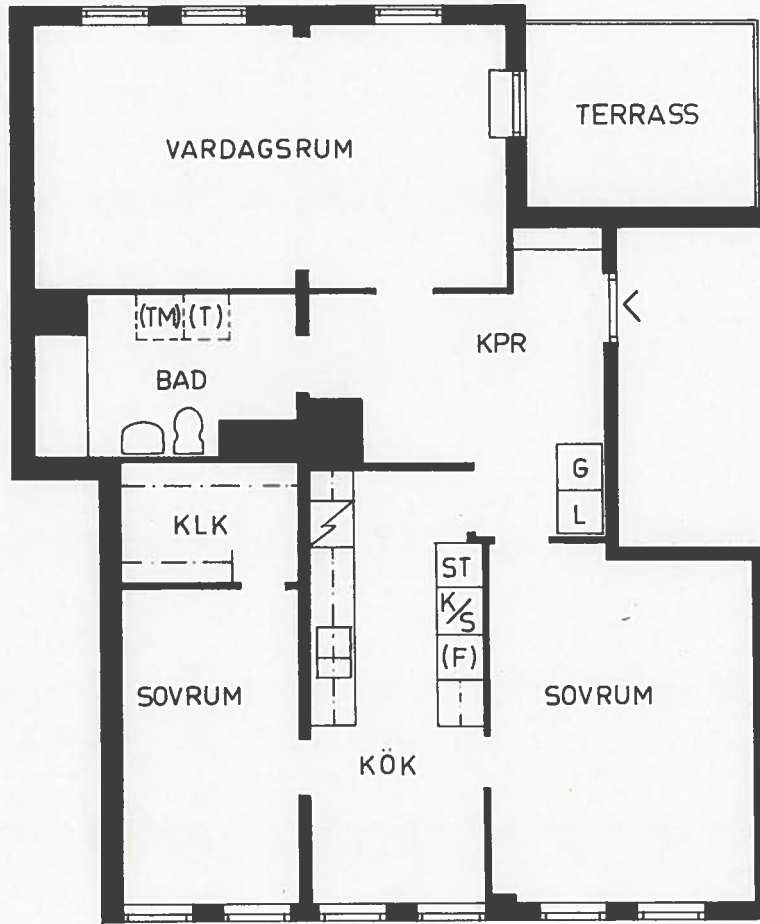
**AB SVENSKA BOSTÄDER**  
**KV. RIDDARSPORREN**

TYP	YTA	LXG. NR
3L	77 m <sup>2</sup>	

17F

0 1 2 3 4 5 6 7 8 9 10  
SKALA 1:100

17H



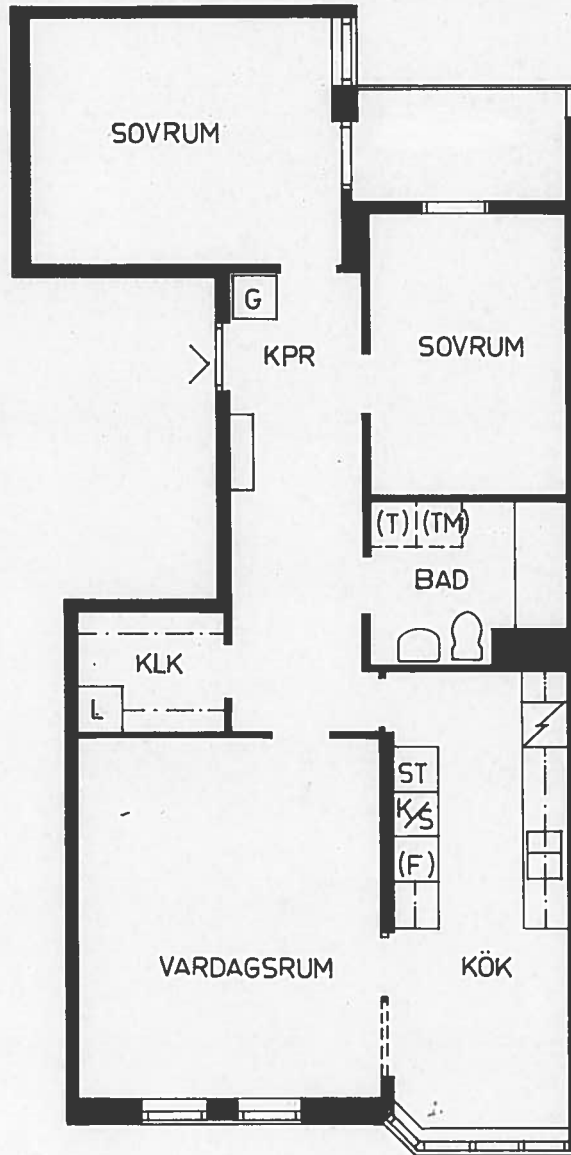
**AB SVENSKA BOSTÄDER  
KV. RIDDARSPORREN**

TYP	YTA	LÄG. NR
3Ms	84 m <sup>2</sup>	

17H

0 1 2 3 4 5 6 7 8 9 10

SKALA 1:100

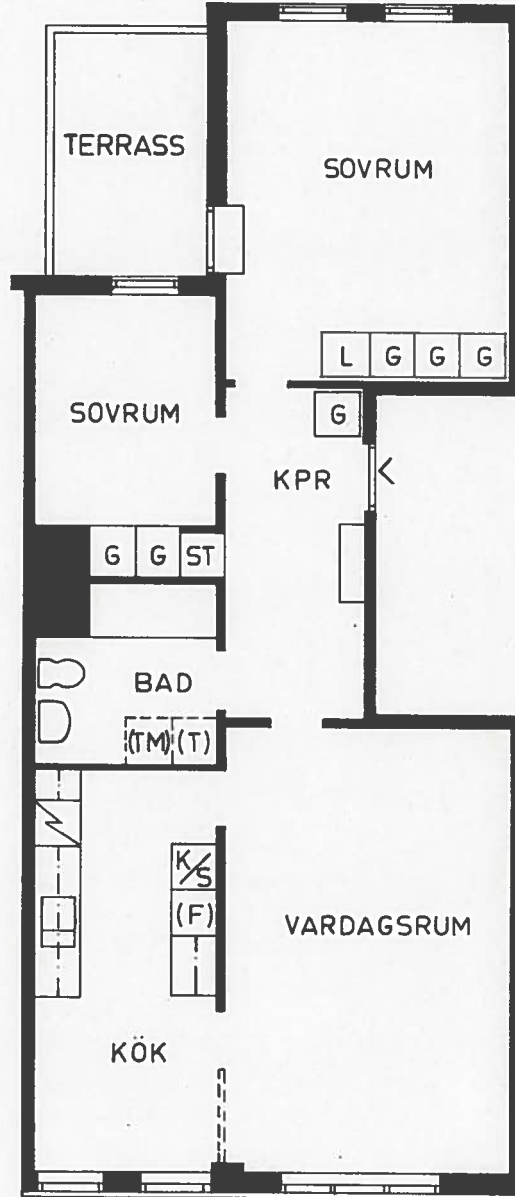


**AB SVENSKA BOSTÄDER  
KV. RIDDARSPORREN**

TYP	YTA	LÄG. NR
30	78 m <sup>2</sup>	

17N

17F



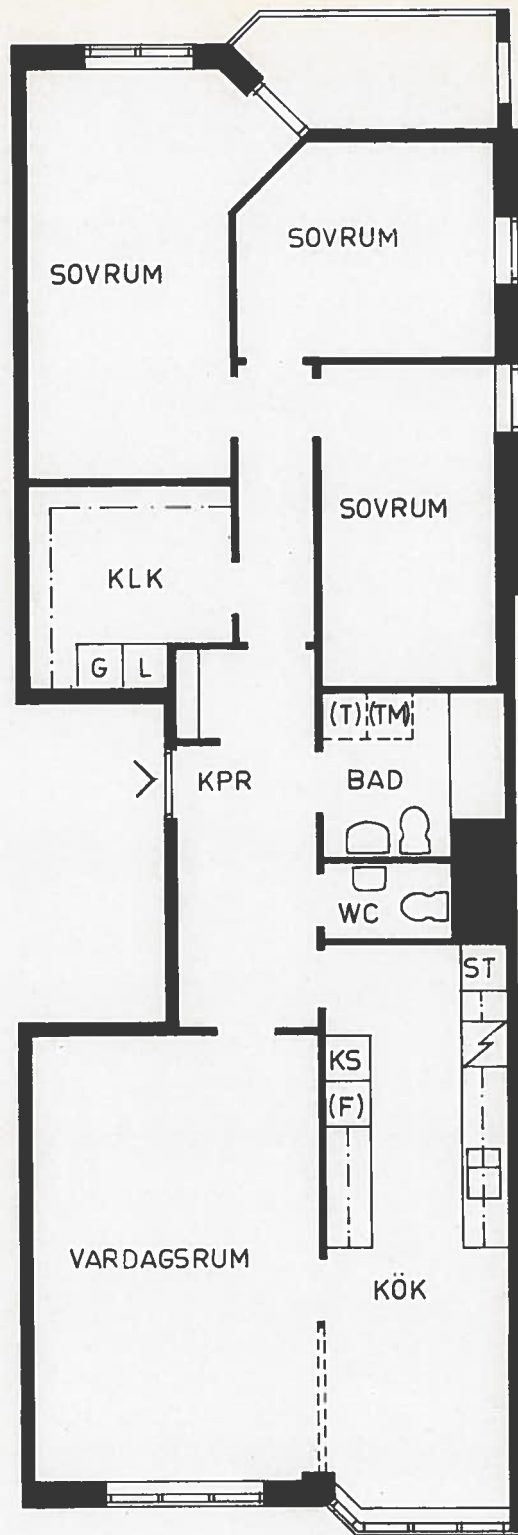
**AB SVENSKA BOSTÄDER  
KV.RIDDARSPORREN**

TYP	YTA	LÄG. NR
3Ps	76 m <sup>2</sup>	

17F

0 1 2 3 4 5 6 7 8 9 10  
SKALA 1:100

17F



**AB SVENSKA BOSTÄDER**  
**KV. RIDDARSPORREN**

TYP	YTA	LÄG. NR
4A	103 m <sup>2</sup>	

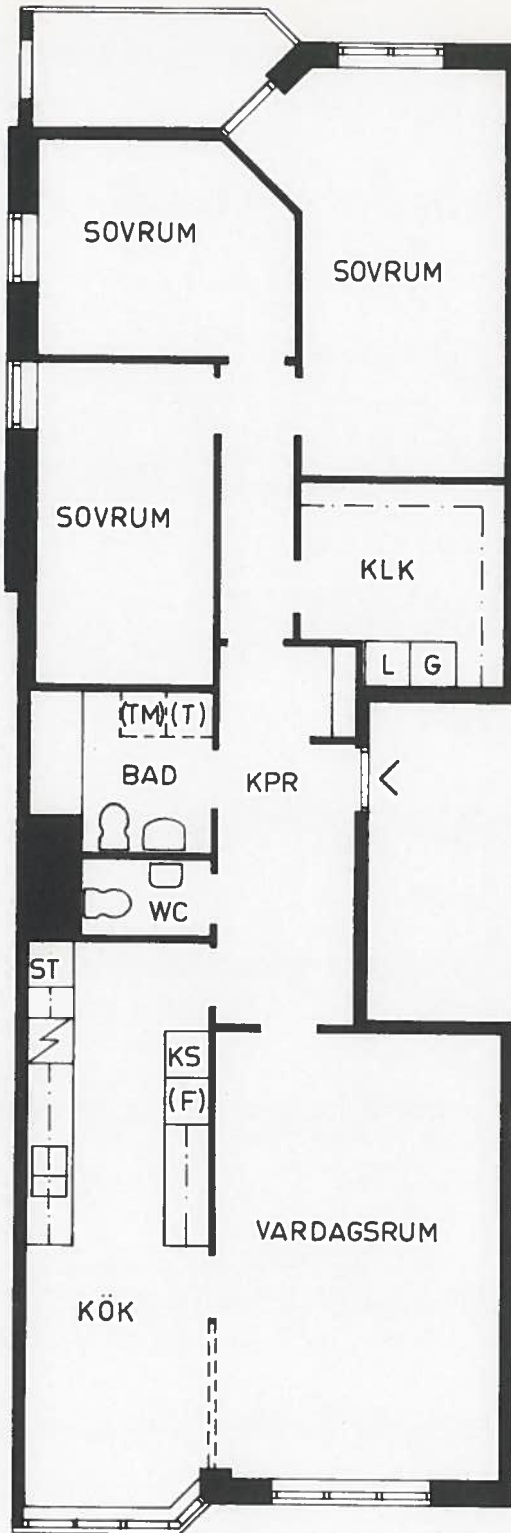
17F



0 1 2 3 4 5 6 7 8 9 10

SKALA 1:100

17F



**AB SVENSKA BOSTÄDER**

**KV. RIDDARSPORREN**

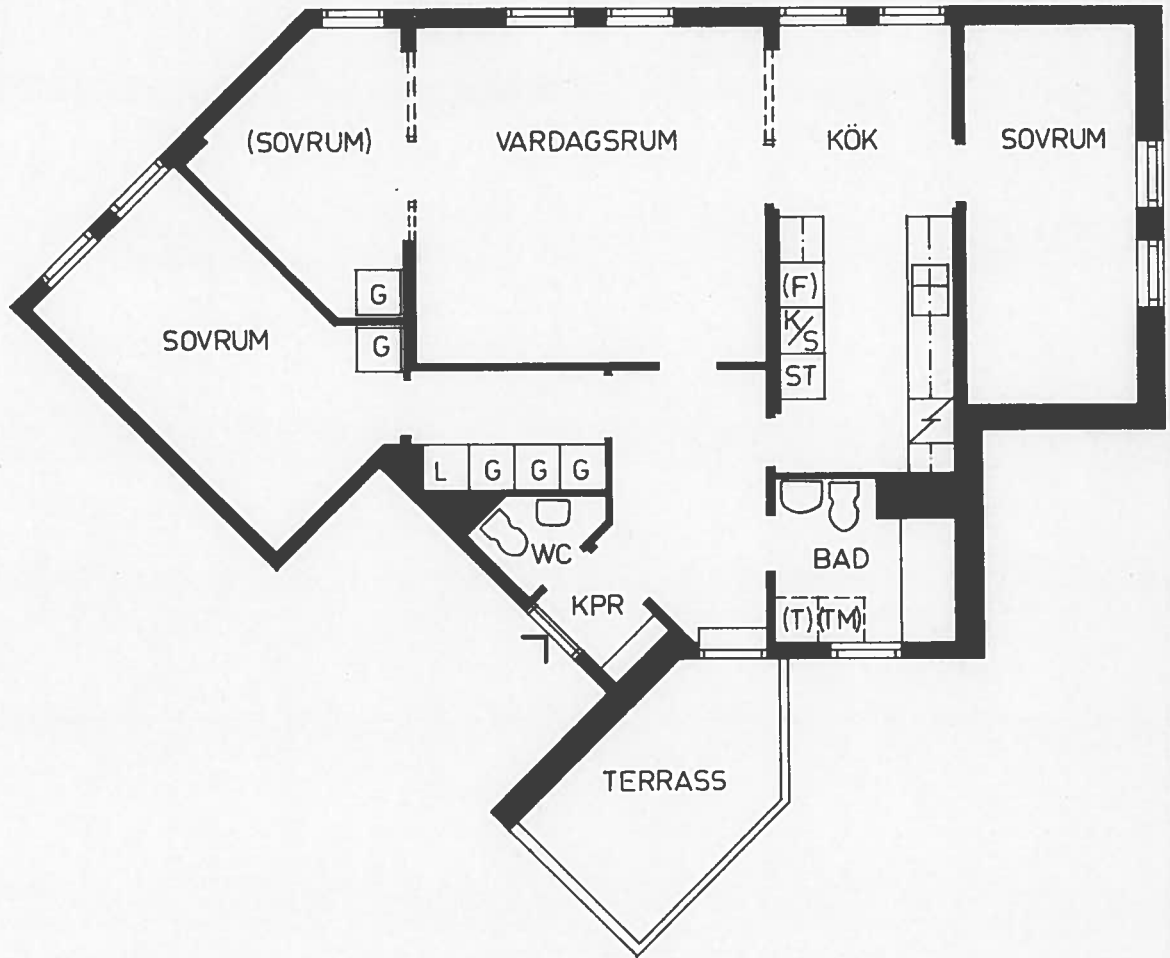
TYP	YTA	LXG. NR
4As	103 m <sup>2</sup>	

17F

0 1 2 3 4 5 6 7 8 9 10

SKALA 1:100

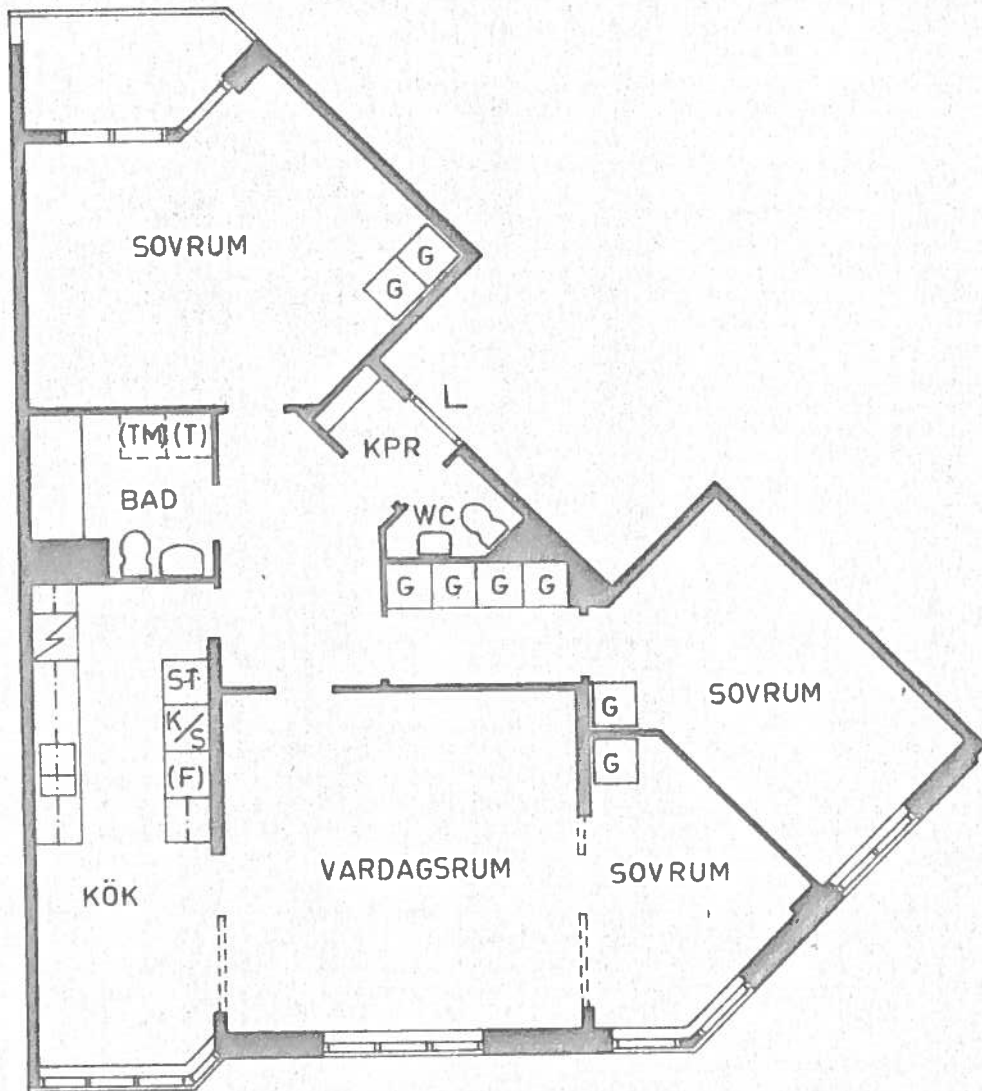
15B



**AB SVENSKA BOSTÄDER  
KV RIDDARSPORREN**

TYP	YTA	LÄG. NR
4 Bs	89 m <sup>2</sup>	

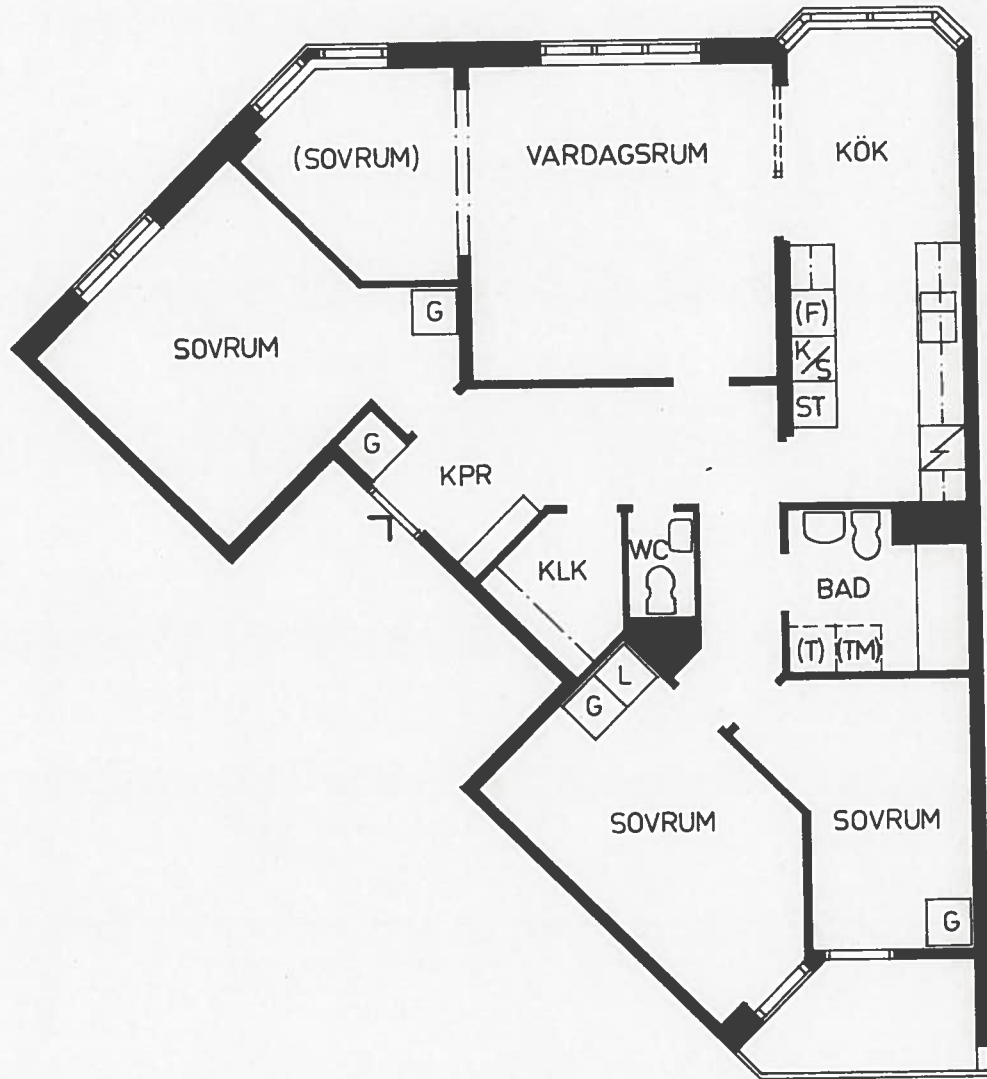
15B



<b>AB SVENSKA BOSTÄDER</b>		
<b>KV. RIDDARSPORREN</b>		
TYP	YTA	LXG. NR
<b>4Cs</b>	<b>96m<sup>2</sup></b>	
<i>15B</i>		

0 1 2 3 4 5 6 7 8 9 10

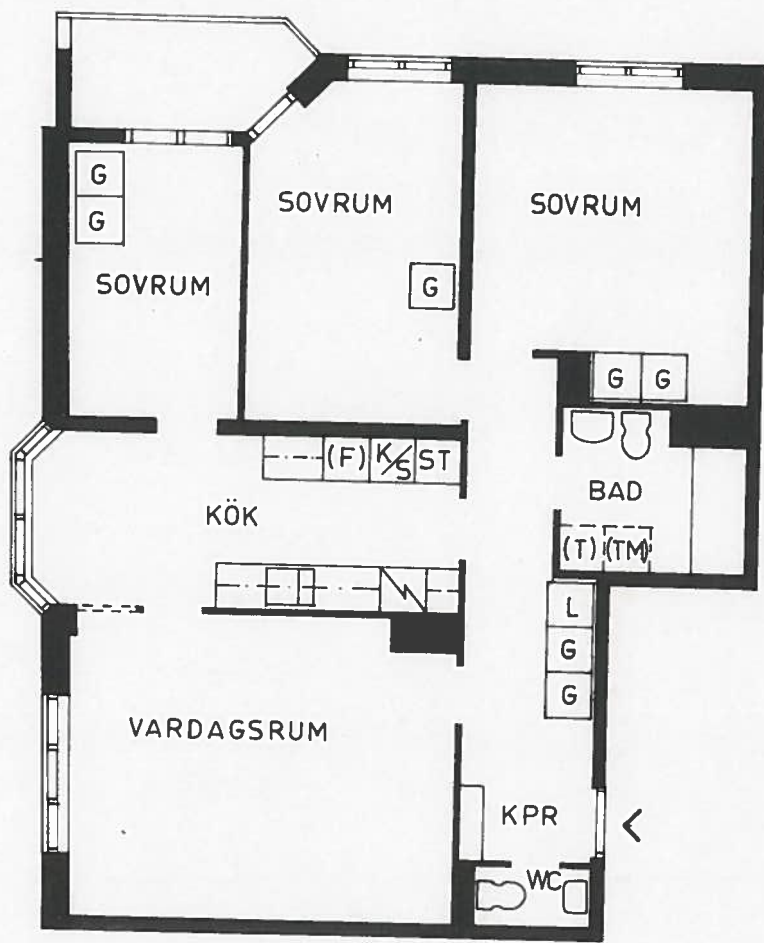
SKALA 1:100



**AB SVENSKA BOSTÄDER  
KV. RIDDARSPORREN**

TYP	YTA	LXG. NR
4D	96 m <sup>2</sup>	

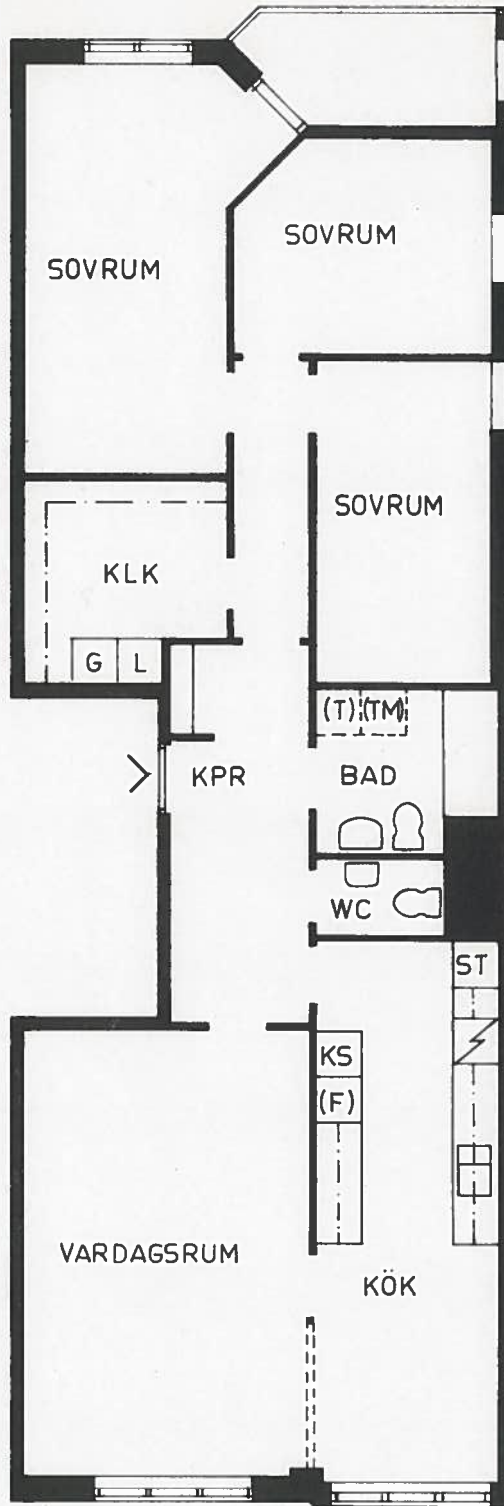
15F



<b>AB SVENSKA BOSTÄDER</b>		
<b>KV. RIDDARSPORREN</b>		
<b>TYP</b>	<b>YTA</b>	<b>LÄG. NR</b>
4F	87 m <sup>2</sup>	
17g		

0 1 2 3 4 5 6 7 8 9 10

SKALA 1:100



**AB SVENSKA BOSTÄDER**  
**KV. RIDDARSPORREN**

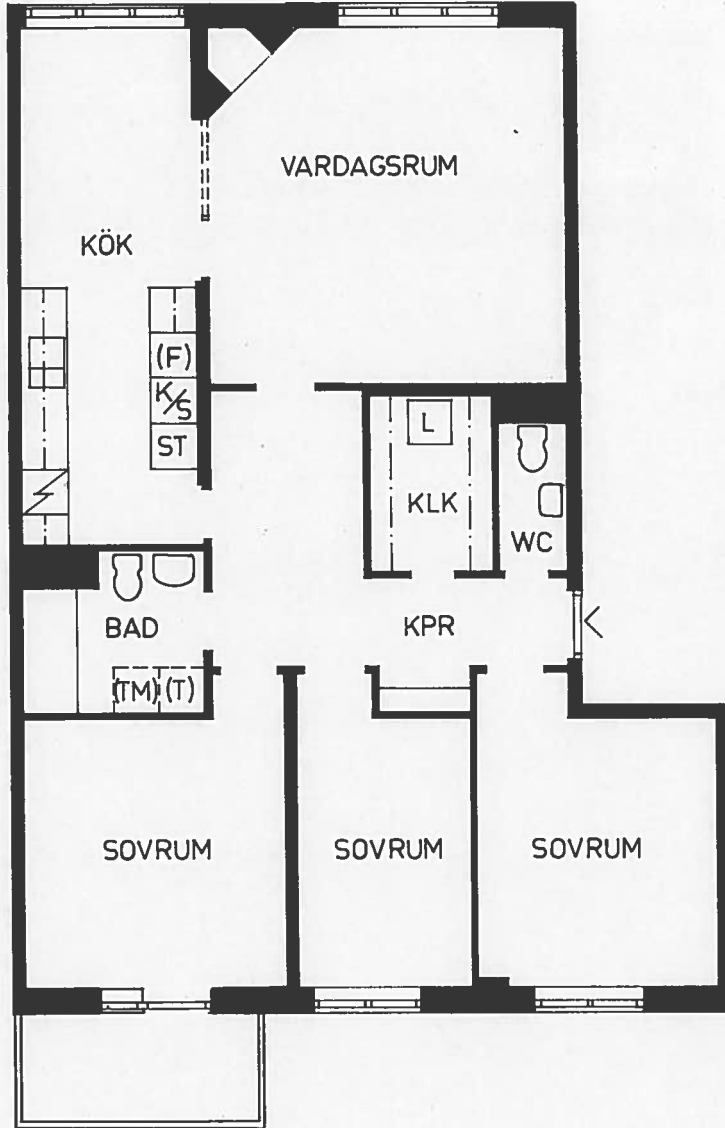
TYP	YTA	LXG. NR
4 G	102 m <sup>2</sup>	

17 F

0 1 2 3 4 5 6 7 8 9 10

SKALA 1:100

170



<b>AB SVENSKA BOSTÄDER</b> <b>KV. RIDDARSPORREN</b>		
TYP	YTA	LÄG. NR
4I	97 m <sup>2</sup>	
170		