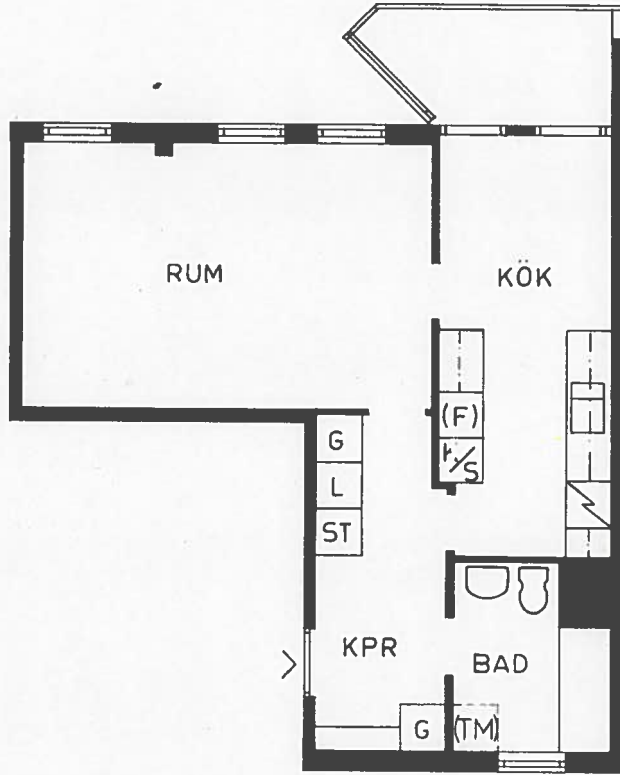


0 1 2 3 4 5 6 7 8 9 10

SKALA 1:100



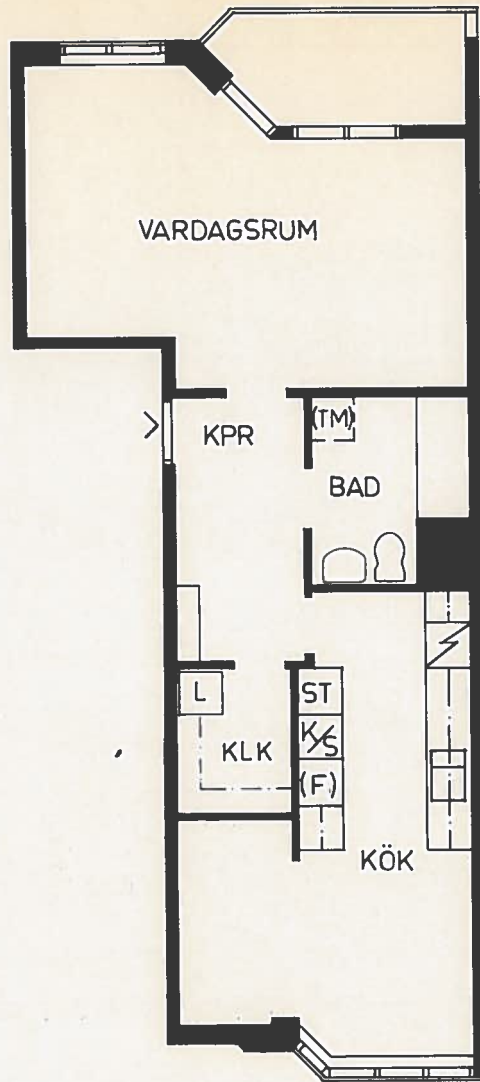
**AB SVENSKA BOSTÄDER
KV. RIDDARSPORREN**

TYP	YTA	LÄG. NR
1As	45 m ²	

17A

0 1 2 3 4 5 6 7 8 9 10

SKALA 1:100



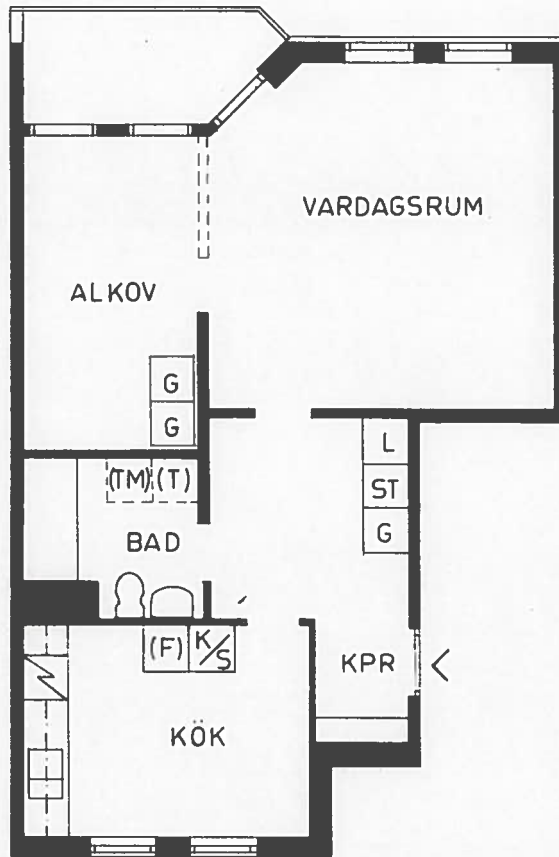
AB SVENSKA BOSTÄDER
KV. RIDDARSPORREN

TYP	YTA	LXG. NR
1B	53m ²	

15A

0 1 2 3 4 5 6 7 8 9 10

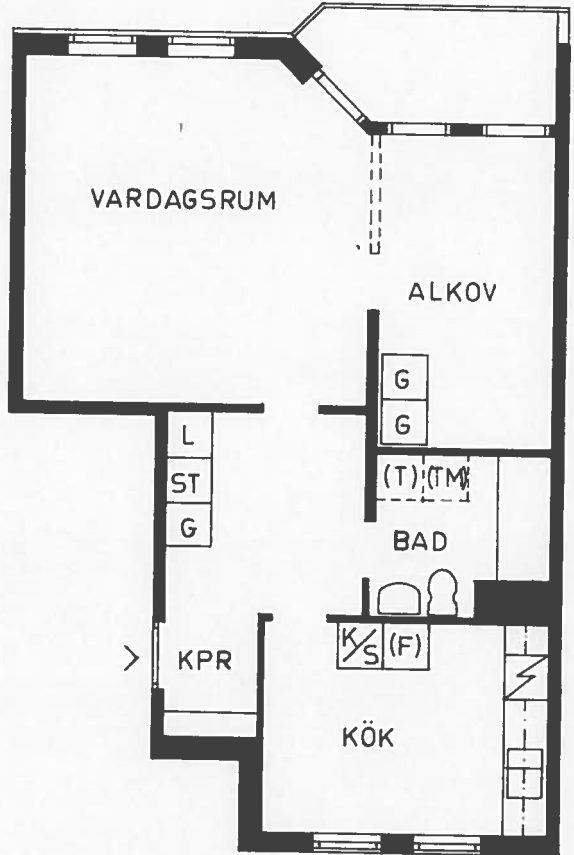
SKALA 1:100



**AB SVENSKA BOSTÄDER
KV. RIDDARSPORREN**

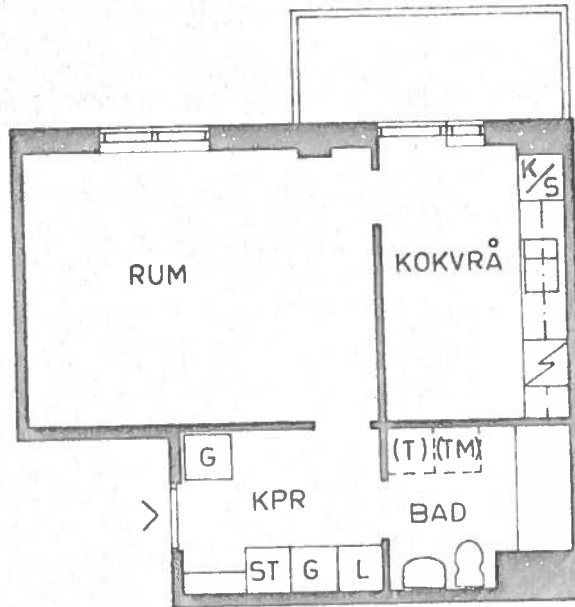
TYP	YTA	LÄG. NR
1C	56 m ²	

17C



AB SVENSKA BOSTÄDER KV. RIDDARSPORREN		
TYP	YTA	LÄG. NR
1Cs	56 m ²	
17 B		

0 1 2 3 4 5 6 7 8 9 10
SKALA 1:100

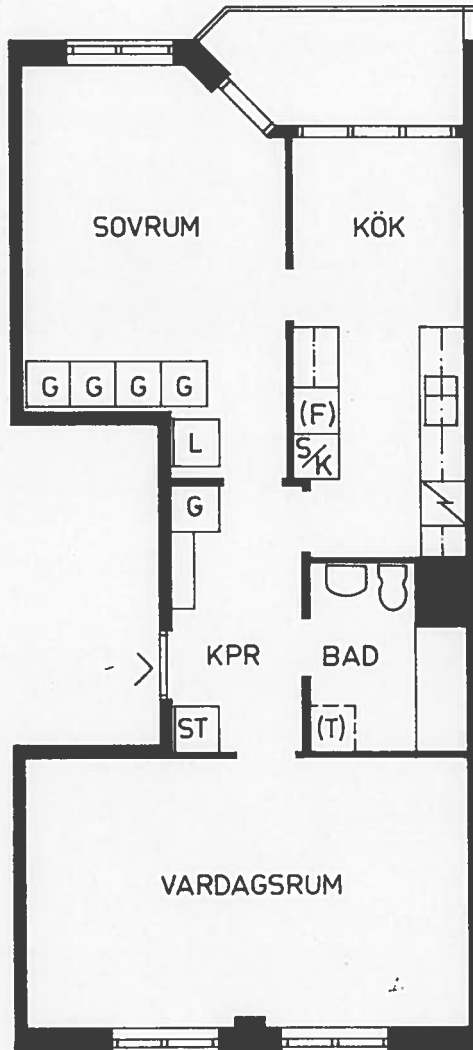


AB SVENSKA BOSTÄDER
KV. RIDDARSPORREN

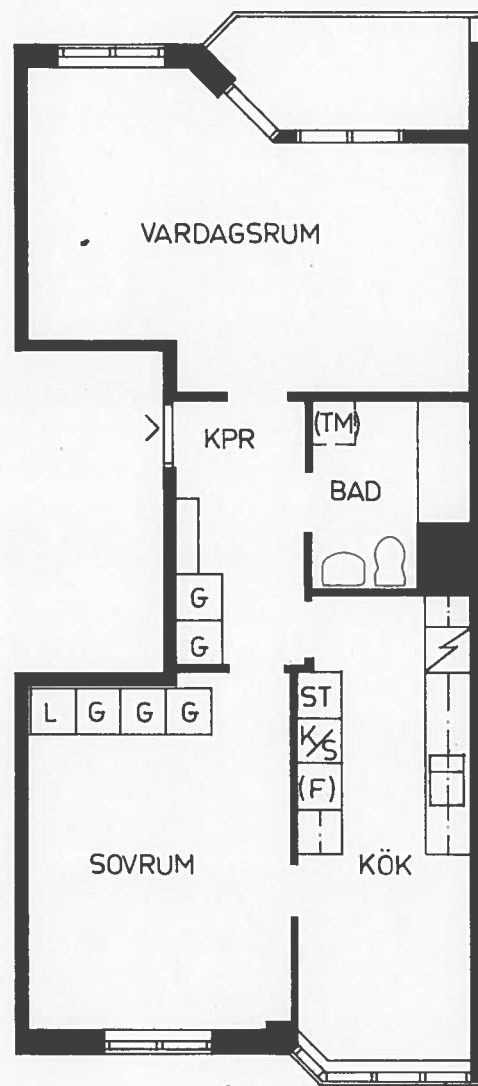
TYP	YTA	LÖG. NR
1 KvB	36m ²	

15 B

17A

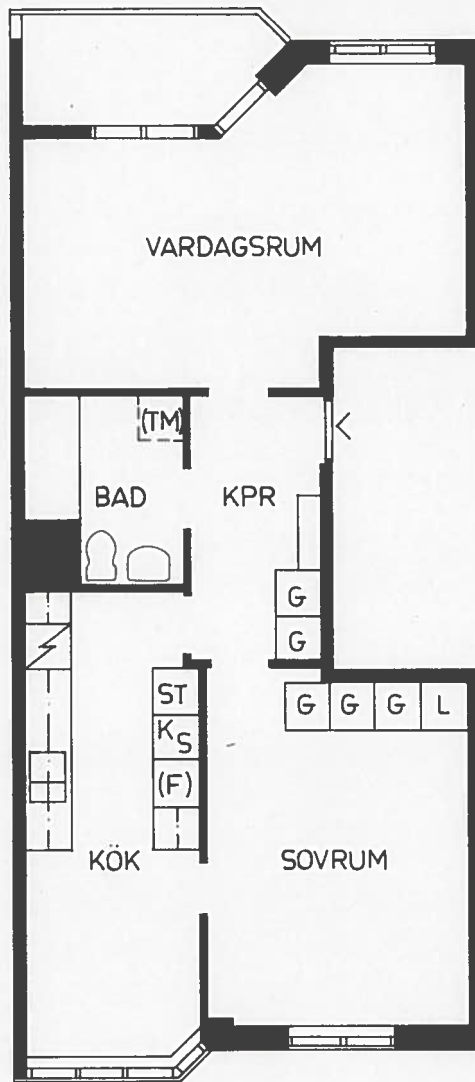


AB SVENSKA BOSTÄDER		
KV. RIDDARSPORREN		
TYP	YTA	LÄG. NR
2As	61m ²	
17A		



AB SVENSKA BOSTÄDER KV. RIDDARSPORREN		
TYP	YTA	LÄG. NR
2B	62 m ²	
15A, 17K, 17L, 17M		

17H



AB SVENSKA BOSTÄDER
KV. RIDDARSPORREN

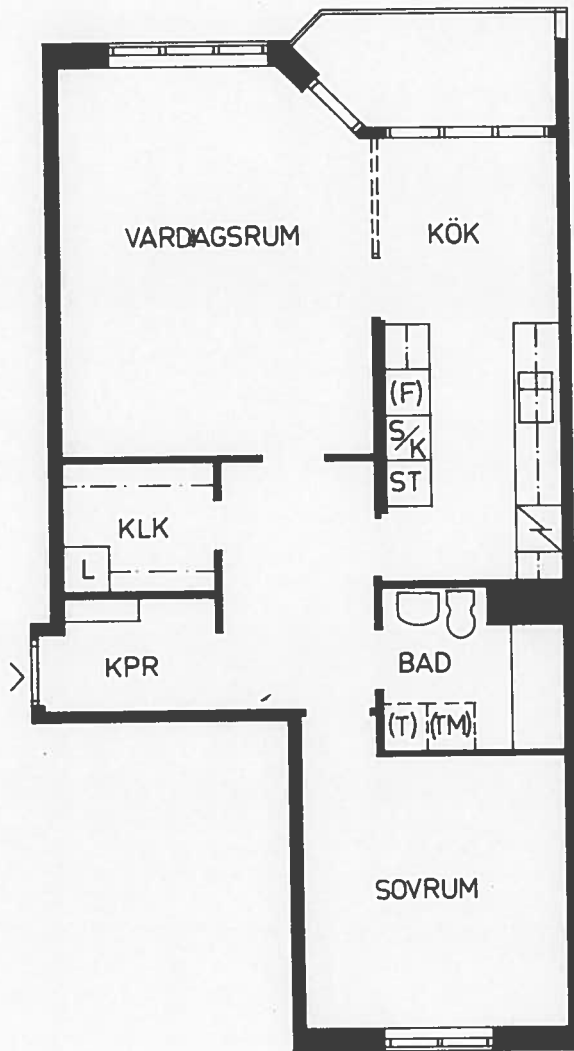
TYP	YTA	LÄG. NR
2Bs	62 m ²	

17H

0 1 2 3 4 5 6 7 8 9 10

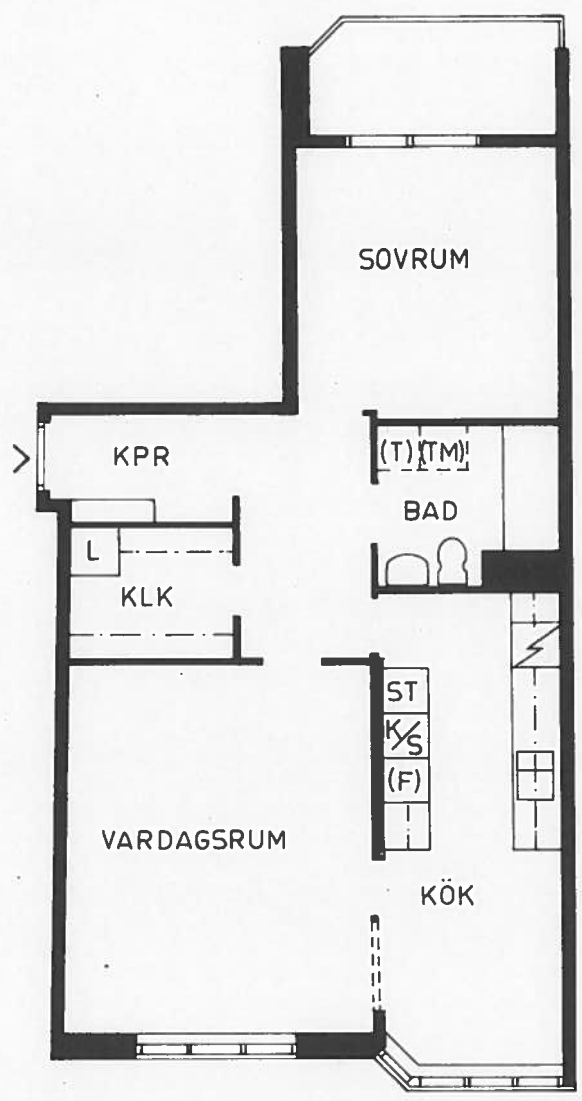
SKALA 1:100

17N

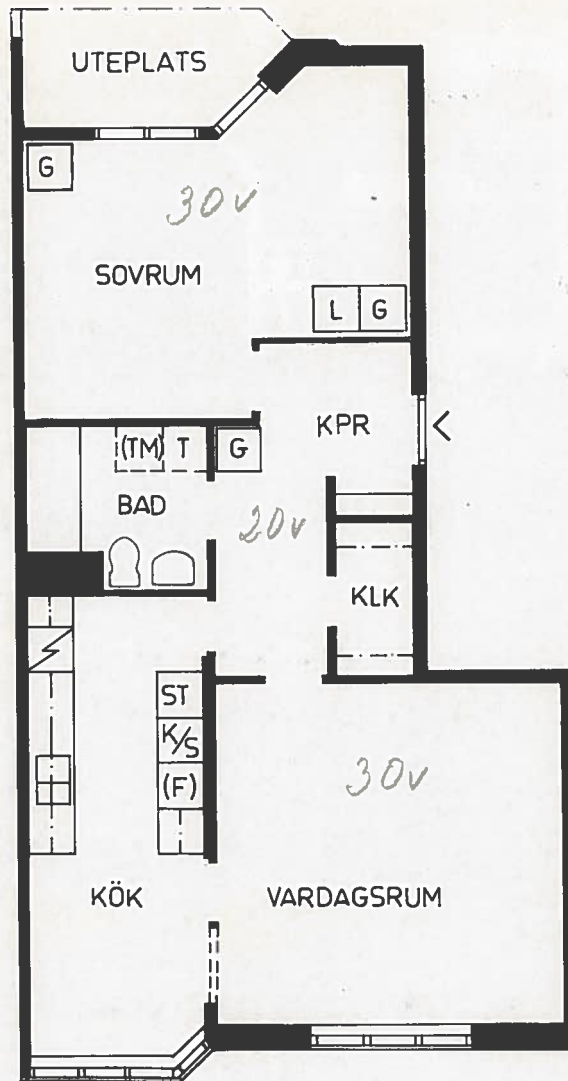


AB SVENSKA BOSTÄDER KV. RIDDARSPORREN		
TYP	YTA	LÄG. NR
2C	67 m ²	
17N		

709

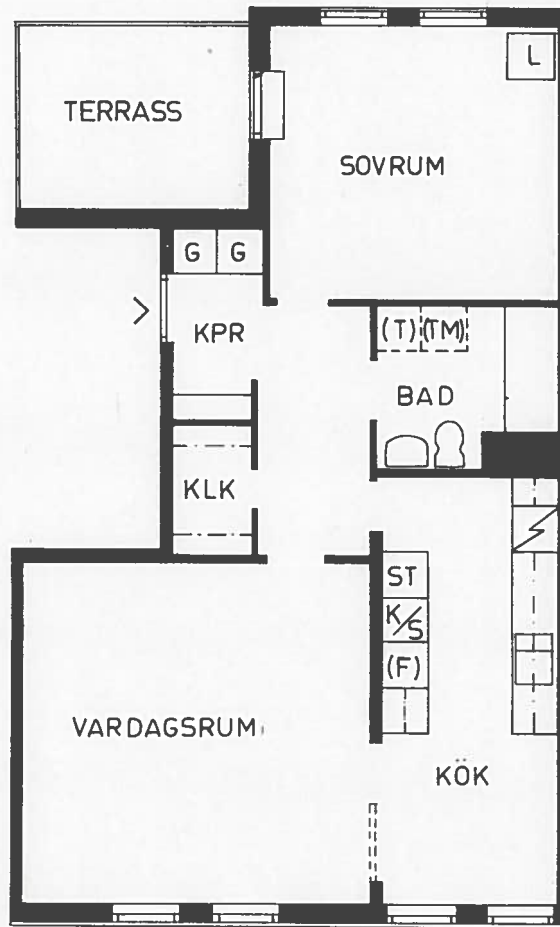


AB SVENSKA BOSTÄDER		
KV. RIDDARSPORREN		
TYP	YTA	LAG. NR
2D	66 m ²	
179		



AB SVENSKA BOSTÄDER		
KV. RIDDARSPORREN		
TYP	YTA	LÅG. NR
2 Is	71 m ²	
17K		

0 1 2 3 4 5 6 7 8 9 10
SKALA 1:100
176
17H

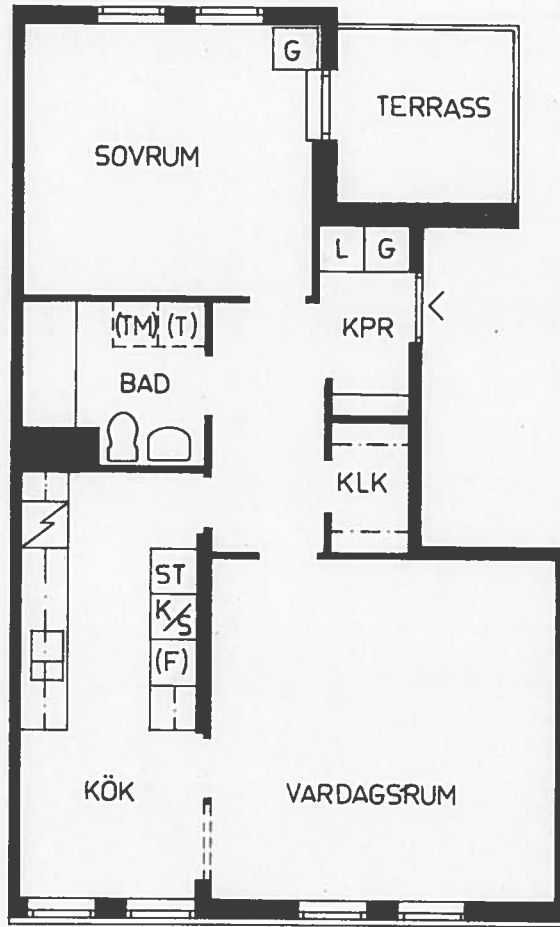


AB SVENSKA BOSTÄDER
KV. RIDDARSPORREN

TYP	YTA	LÄG. NR
2J	64 m ²	

176, 17H

175
176



AB SVENSKA BOSTÄDER
KV. RIDDARSPORREN

TYP	YTA	LÄG. NR
2 Js	64 m ²	

176, 177, 178